



*Güneş Makina®*

# *Lifting Components*



*Since 1975*

## *We Produce Quality*

INSPECCO  
ISO 9001

TÜV  
AUSTRIA



[info@gunesmakina.com](mailto:info@gunesmakina.com)

[www.gunesmakina.com](http://www.gunesmakina.com)

Product Catalog No: 3



Güneş Makina®



[www.gunesmakina.com](http://www.gunesmakina.com)

INSPECCO  
ISO 9001

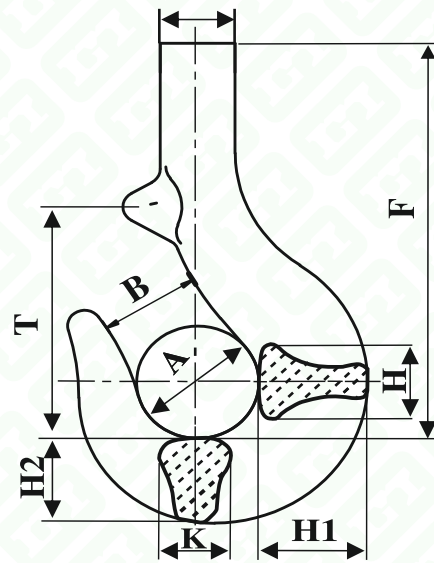
TÜV  
AUSTRIA

ДОБРОВОЛЬНАЯ  
СЕРТИФИКАЦИЯ  
PG

CE

TSE  
NDT  
Test Calibration





Shank Hook DIN (GM 15401)

Nr	Dimensions									Weight Kg/Pcs
	A	B	D	F	H	H1	H2	K	T	
025	36	28	20	152	22	28	25	20	75	0.74
05	42	34	25	172	30	38	31	26	95	1.4
08	48	38	30	191	37	44	37	32	103	2.3
1	50	40	32	206	41	48	40	35	108	2.6
1.6	56	45	36	233	46	56	48	40	119	4.32
2.5	63	50	42	263	56	67	58	48	135	6.95
4	71	56	48	297	65	80	67	54	152	9.9
5	80	63	55	332	73	90	75	62	170	13.6
6	91	72	62	390	80	100	86	67	195	20.4
8	101	81	67	435	92	113	96	76	213	28.8
10	118	93	77	490	105	125	110	90	225	39
12	130	106	88	540	114	140	123	105	250	62
16	145	114	97	615	130	168	132	118	290	95
20	165	130	110	680	140	184	156	120	340	135
25	180	140	124	750	160	200	170	132	360	150
32	200	170	136	830	180	240	190	160	420	200
40	230	180	155	930	200	250	215	170	440	310
50	250	210	175	1000	224	280	236	190	485	430

\* Please contact us for other materials and for dimensions of the special products.

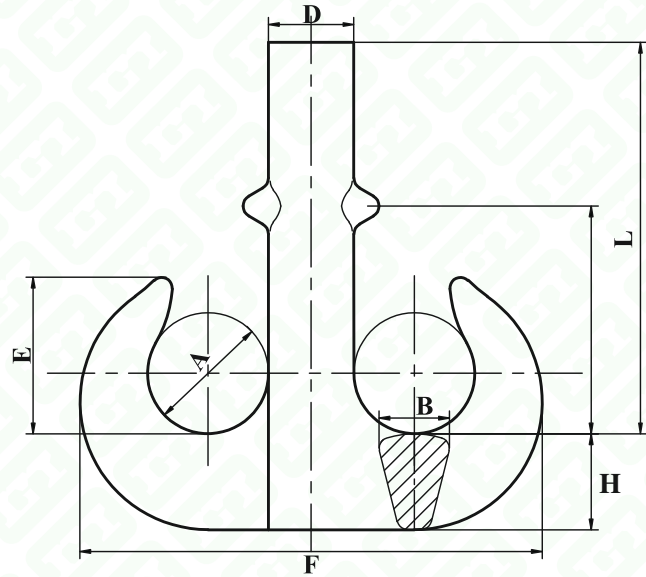
\*\* Our products have been certified according to EC regulations, they have CE mark.

\*\*\* All of our products are being tested according to relevant standards by using test devices which are calibrated by TSE.

If requested, all tests are done under supervision of GLIS' inspector and reported by GLIS.

Forged With Latch

Material : P=S355, S-T=42crMo4, V=34crNiMo6



### Ramshorn Hooks DIN (GM 15402)

Nr	Dimensions							Weight Kg/Pcs
	A	B	H	D	E	F	L	
8	80	67	85	67	103	337	415	25
10	90	75	95	75	116	377	450	35
12	100	85	106	85	130	421	510	49
16	112	95	118	95	146	471	580	69
20	125	106	132	106	163	531	650	97
25	140	118	150	118	182	598	715	135
32	160	132	170	132	205	672	790	193
40	180	150	190	150	230	754	885	280
50	200	170	212	170	260	842	965	388

Our products have been certified according to EC regulations, they have CE marks

Forged With Latch

Material : P=S355, S-T=42crMo4



Drive Group Table

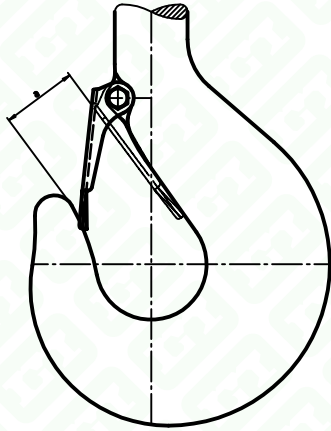
The table below specifies the drive group as a function of hook strength class, and the lifting capacity as a function of hook number. It does not make specifications for hooks whose lifting capacity is under 100 kg or over 500,000 kg. Where such hooks are to be used in exceptional cases, the lifting capacity shall be selected in accordance with the R10 series of preferred numbers specified in DIN 323 Part 1.



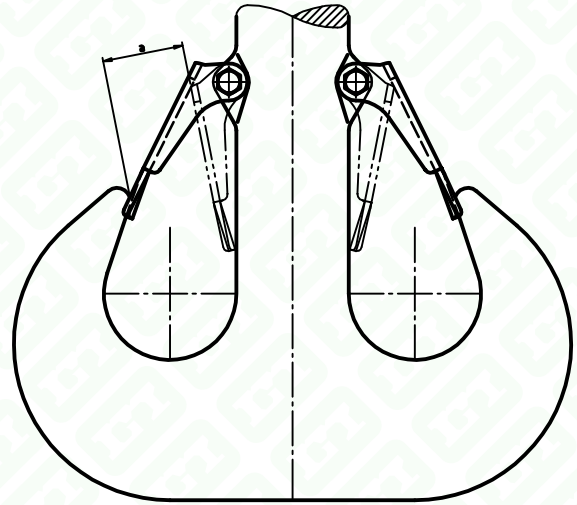
STRENGTH CLASS		DRIVE GROUP 1)										STRENGTH CLASS
M	-	-	-	-	1B <sub>m</sub> / M3	1A <sub>m</sub> / M4	2 <sub>m</sub> / M5	3 <sub>m</sub> / M6	4 <sub>m</sub> / M7	5 <sub>m</sub> / M8	-	M
P	-	-	-	1B <sub>m</sub> / M3	1A <sub>m</sub> / M4	2 <sub>m</sub> / M5	3 <sub>m</sub> / M6	4 <sub>m</sub> / M7	5 <sub>m</sub> / M8	-	-	P
S	-	-	1B <sub>m</sub> / M3	1A <sub>m</sub> / M4	2 <sub>m</sub> / M5	3 <sub>m</sub> / M6	4 <sub>m</sub> / M7	-	-	-	-	S
T	-	1B <sub>m</sub> / M3	1A <sub>m</sub> / M4	2 <sub>m</sub> / M5	3 <sub>m</sub> / M6	4 <sub>m</sub> / M7	-	-	-	-	-	T
V	1B <sub>m</sub> / M3	1A <sub>m</sub> / M4	2 <sub>m</sub> / M5	3 <sub>m</sub> / M6	4 <sub>m</sub> / M7	-	-	-	-	-	-	V
HOOK NUMBER		LIFTING CAPACITY (kg)										HOOK NUMBER
006	320	250	200	160	125	100	-	-	-	-	-	006
010	500	400	320	250	200	160	125	100	-	-	-	010
012	630	500	400	320	250	200	160	125	100	-	-	012
020	1000	800	630	500	400	320	250	200	160	125	-	020
025	1250	1000	800	630	500	400	320	250	200	160	-	025
04	2000	1600	1250	1000	800	630	500	400	320	250	-	04
05	2500	2000	1600	1250	1000	800	630	500	400	320	-	05
08	4000	3200	2500	2000	1600	1250	1000	800	630	500	-	08
1	5000	4000	3200	2500	2000	1600	1250	1000	800	630	-	1
1.6	8000	6300	5000	4000	3200	2500	2000	1600	1250	1000	-	1.6
2.5	12500	10000	8000	6300	5000	4000	3200	2500	2000	1600	-	2.5
4	20000	16000	12500	10000	8000	6300	5000	4000	3200	2500	-	4
5	25000	20000	16000	12500	10000	8000	6300	5000	4000	3200	-	5
6*	32000	25000	20000	16000	12500	10000	8000	6300	5000*	4000	-	6
8	40000	32000	25000	20000	16000	12500	10000	8000	6300	5000	-	8
10*	50000	40000	32000	25000	20000	16000	12500	10000	8000*	6300	-	10
12*	63000	50000	40000	32000	25000	20000	16000	12500*	10000*	8000	-	12
16*	80000	63000	50000	40000	32000	25000	20000	16000*	12500	10000	-	16
20*	100000	80000	63000	50000	40000	32000	25000	20000*	16000	12500	-	20
25	125000	100000	80000	63000	50000	40000	32000	25000	20000	16000	-	25
32*	160000	125000	100000	80000	63000	50000	40000*	32000*	25000	20000	-	32
40*	200000	160000	125000	100000	80000	63000	50000*	40000	32000	25000	-	40
50	250000	200000	160000	125000	100000	80000	63000	50000	40000	32000	-	50
63*	320000	250000	200000	160000	125000	100000	80000*	63000	50000	40000	-	63
80*	400000	320000	250000	200000	160000	125000	100000*	80000	63000	50000	-	80
100*	500000	400000	320000	250000	200000	160000	125000*	100000	80000	63000	-	100
125*	-	500000	400000	320000	250000	200000	160000*	125000	100000	80000	-	125
160*	-	-	500000	400000	320000	250000	200000*	160000	125000	100000	-	160
200*	-	-	-	500000	400000	320000	250000*	200000	160000	125000	-	200
250	-	-	-	-	500000	400000	320000	250000	200000	160000	-	250

NOTE: Hooks used in a drive group lower than 1B<sub>m</sub> / M3 are not included here.  
\*Hooks to be used on cranes such as, are used in steel works and rolling mills.  
1) In accordance with subclause 4.1 of the February 1974 edition of DIN 15 020 Part 1 and AS1418.1 - 2002.



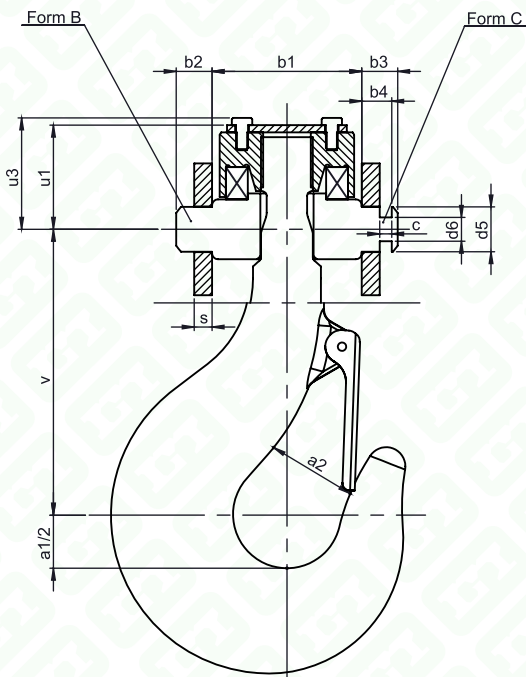


Single Hook Number	Hook aperture width a (mm)
0.5	28.00
0.8	34.00
1	34.00
1.6	40.00
2.5	41.00
4	49.00
5	55.00
6	59.00
8	69.00
10	76.00
12	84.00
16	97.00
20	110.00
25	132.00
32	137.00
40	167.00
50	188.00
63	205.00



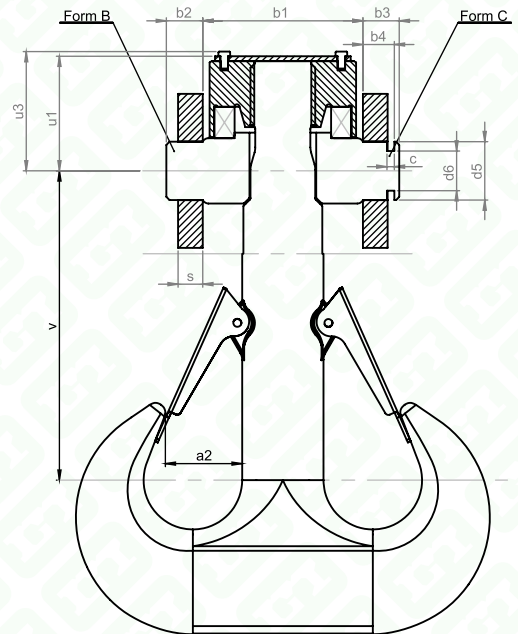
Double Hook Number	Hook aperture width a (mm)
2.5	30.00
4	31.00
5	38.00
6	48.00
8	47.00
10	57.00
12	60.00
16	63.00
20	73.00
25	87.00
32	108.00
40	112.00
50	130.00





Single Hook (GM 15411)

N° HOOK	a1	b1	b2	b3	b4	c	d5	d6	s	u1	u3	v	BEARING
1	50	50	17.5	-	-	-	25	-	10	39	-	130	51.106
1.6	56	65	17.5	-	-	-	25	-	10	53	-	140	51.107
2.5	63	80	22.5	22.5	17	8	30	19	10	63.5	-	155	51.108
4	71	90	25	25	19	8	35	23	12	71	-	175	51.110
5	80	100	27.5	27.5	22	8	40	27	15	79.5	-	195	51.112
6	90	125	30	30	24	10	45	32	15	90	95	240	51.214
8	100	140	30	35	29	10	50	36	20	98	104	265	51.216
10	112	160	35	35	29	10	55	40	20	110	116	280	51.218
12	125	180	35	42.5	34	10	60	42	25	127	133	315	51.220
16	140	190	-	42.5	36	12	70	50	25	136	143	370	51.222
20	160	200	-	47.5	41	12	80	56	30	150	157	415	51.224
25	180	220	-	49	41	12	90	64	30	166	173	460	51.226
32	200	260	-	59	51	12	100	72	40	188	195	500	51.232
40	224	285	-	65	58	14	110	80	45	208	215	565	51.236
50	250	335	-	65	58	14	125	92	45	224	232	620	51.244
63	280	380	-	71	63	14	140	104	50	260	267	700	51.248
80	315	420	-	72.5	63	14	160	120	50	287	294	800	51.256
100	355	470	-	87.5	77	18	180	136	60	326	333	885	51.260
125	400	510	-	87.5	77	18	200	150	60	365	374	1000	51.268
160	450	550	-	100	87	18	220	164	70	406	416	1130	51.272
200	500	610	-	100	87	18	240	184	70	492	501	1270	51.372
250	560	700	-	110	97	18	260	200	80	552	561	1440	51.384



Double Hook (GM 15411)

N° HOOK	a2	b1	b2	b3	b4	c	d5	d6	s	u1	u3	v	BEARING
1	32	50	17.5	-	-	-	25	-	10	39	-	130	51.106
1.6	36	65	17.5	-	-	-	25	-	10	53	-	140	51.107
2.5	40	80	20	22.5	17	8	30	19	10	63.5	-	155	51.108
4	45	90	22.5	25	19	8	35	23	12	71	-	175	51.110
5	50	100	25	27.5	22	8	40	27	15	79.5	-	195	51.112
6	56	125	27.5	30	24	10	45	32	15	90	95	240	51.214
8	63	140	30	35	29	10	50	36	20	98	104	265	51.216
10	71	160	30	35	29	10	55	40	20	110	116	280	51.218
12	80	180	35	42.5	34	10	60	42	25	127	133	315	51.220
16	90	190	35	42.5	36	12	70	50	25	136	143	370	51.222
20	100	200	-	47.5	41	12	80	56	30	150	157	415	51.224
25	112	220	-	49	41	12	90	64	30	166	173	460	51.226
32	125	260	-	59	51	12	100	72	40	188	195	500	51.232
40	140	285	-	65	58	14	110	80	45	208	215	565	51.236
50	160	335	-	65	58	14	125	92	45	224	232	620	51.244
63	180	380	-	71	63	14	140	104	50	260	267	700	51.248
80	200	420	-	72.5	63	14	160	120	50	287	294	800	51.256
100	224	470	-	87.5	77	18	180	136	60	326	333	885	51.260
125	250	510	-	87.5	77	18	200	150	60	365	374	1000	51.268
160	280	550	-	100	87	18	220	164	70	406	416	1130	51.272
200	315	610	-	100	87	18	240	184	70	492	501	1270	51.372
250	355	700	-	110	97	18	260	200	80	552	561	1440	51.384





HOOK TRAVERS & SAFETY LATCH

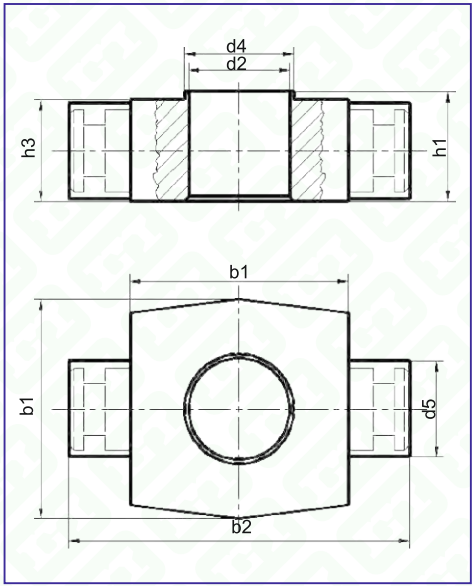


Güneş Makina®



Hook Travers (GM 15412)

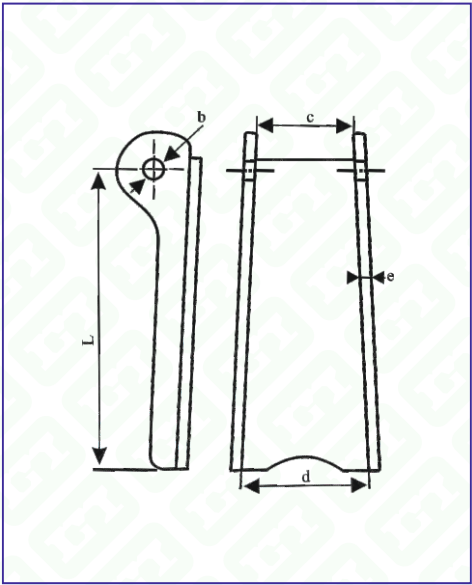
Nr	Dimensions							Weight Kg/Pcs
	B1	B2	D2	D4	D5	H1	H3	
05-1	51	94					27	0.73
1.6	68	104	25	38	27	32	30	1.05
2.5	85	132	28	43	32	43	40	2.00
4	93	145	35	60	37	47	44	3.00
5	102	158	33	69	42	52	47	3.90
6	127	189	40	79	47	57	52	6.50
8	142	210	44	89	50	63	58	8.90
10	163	235	45	99	55	72	66	13.40
12	180	268	53	110	63	86	79	19.50
16	197	285	75	120	74	98	91	26.20
20	207	302	74	131	85	97	90	29.00
25	220	318	74	140	95	109	101	38.00
32	260	378	113	160	100	115	106	55.00
40	290	425	115	185	115	135	125	85.00
50	340	475	130	225	130	150	140	125.00



\* Please contact us for other meterials and for dimensons of the special products.  
\*\* All of our products are being tested according to relevant standards by using test devices which are calibrated by TSE.  
If requested, all tests are done under supervision of GLIS' inspector and reported by GLIS.  
Forged  
Material : C 35 - C 45 42CRMO4

Safety Latch

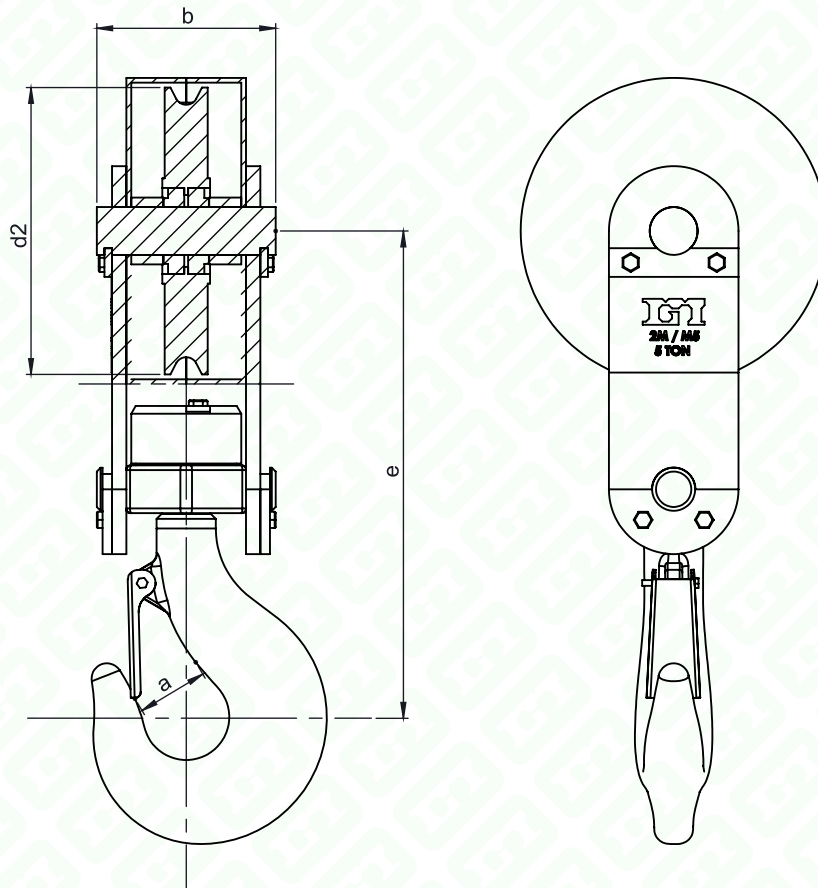
L	15401 Nr	15402 Nr	GM 319 Nr	Eye Hook Nr	Dimensions			
					B	C	D	E
43	025		2.5 - 3.2	1.2-1.6-2.5	4	19	20	1.5
53	05		5.4	3.2-5.4	4	19	20	1.5
67	08 - 1-1.6		8	8	5	28	32	3
85	2.5 - 4		11.5 - 16	11.5	6	35	42	3
106	5			16	7	35	45	4
120	6	8		21.2	7	38	50	4
135	8-10	10-12		30	9	48	55	4
155	12	16			11	63	62	4
185	16	20			11	68	65	4
215	20	25			11	73	72	5
230	25	32			13	85	91	5
277	32-40	40			13	91	88	5
330	50	50			18	116	113	5
380	63	80			18	114	96	96





Güneş Makina®

## ONE SHEAVES HOOK BLOCKS FOR HOIST



Hook Number GM 15401	Load Capacities t		Wire Rope mm	Dimensions			
	2m/M5	1 Am/M4		a	b	d2	e
Nr 1,6	3,2	4	12-14	45	100	300	380
Nr 2,5	5	6,3	16-18	50	125	350	430
Nr 4	8	10	20-22	56	140	400	485
Nr 5	10	12,5	22-24	63	155	450	535



[www.gunesmakina.com](http://www.gunesmakina.com)



TWO SHEAVES HOOK BLOCKS FOR HOIST



Güneş Makina®

